

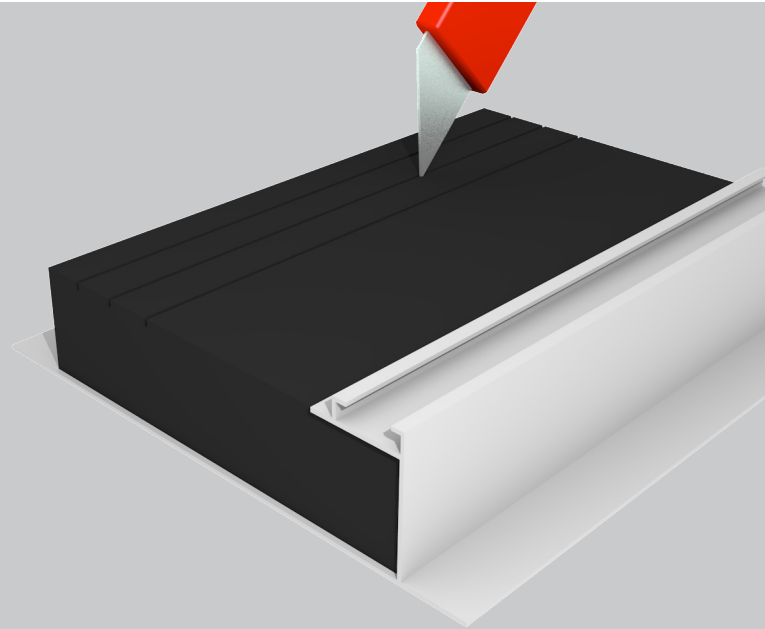
Flexi-Closer

multi-width thermal cavity closer
for window and door reveals



key features

- » Closes cavity around window and door reveals
- » Prevents cold bridging
- » Insulated with expanded polystyrene (EPS)
- » One product provides 4 standard cavity widths: 65, 75, 85 & 100mm
- » Large version for 110, 125 & 150mm cavities
- » Single flange available for check reveal details



Application

ARC Flexi-Closer closes the cavity around window and door openings. The rigid PVCu profile is insulated with grooved expanded polystyrene insulation (EPS) allowing the product to be simply cut to the required cavity width on site. Flexi-Closer helps prevent moisture, mould and staining from around windows and doors.

Standards

ARC Flexi-Closer is insulated with expanded polystyrene which conforms to BS EN 13163:2001 Thermal Insulation Products for Buildings, Factory Made Products of Expanded Polystyrene (EPS).

Thermal Properties

ARC Flexi-Closer with EPS insulation has a thermal conductivity of 0.038W/mK.

Storage and Packaging

ARC Flexi-Closers are supplied in branded polythene packs which offer protection during transport as well as providing ease of identification on-site.

Don't take our
word for it, see our
accreditation...



Assessed to ISO 9001 & ISO 14001
BRE Certificate No. 1227



Cold Bridging

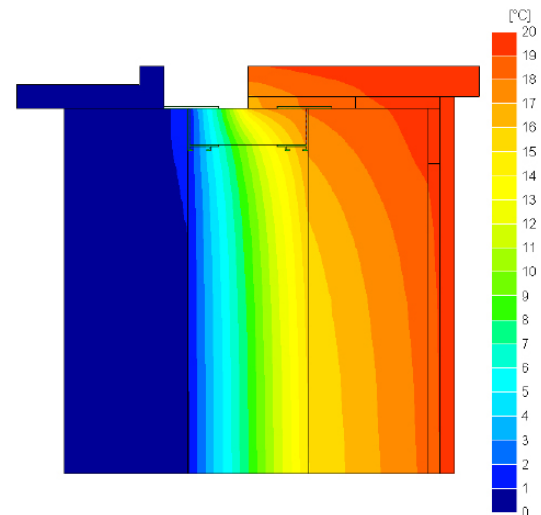
Cold bridges are sections through the fabric of significantly lower thermal resistance than the rest of the construction. It is most commonly found around window and door openings and usually shows itself through so called pattern staining. A cold bridge through an external frame attracts moisture in the form of surface condensation which attracts dirt and dust. This surface condensation can also lead to mould growth and damage to internal plaster and paint work.

The Solution

ARC Flexi-Closer will significantly reduce the risk of cold bridging around window and door openings when fitted in accordance with the manufacturer's recommendations.

ARC cavity closers have been assessed using software that complies with the Standard for Thermal Bridge Calculations BS EN ISO 10211-2007. The conventions for calculations specified in the BRE document BR497 were also followed. The results are compared with the criteria set in the BRE Information Paper IP1/06 'Assessing the Effects of Thermal Bridging at Junctions and Around Openings' which is referenced in Building Regulations as shown below.

Detail	Default F-value	F-value with ARC Flexi-Closer	Default Ψ -value	Ψ -value with ARC Flexi-Closer
Jamb (100mm cavity)	0.75	0.928	0.05	0.014
Sill (100mm cavity)	0.75	0.947	0.04	0.009



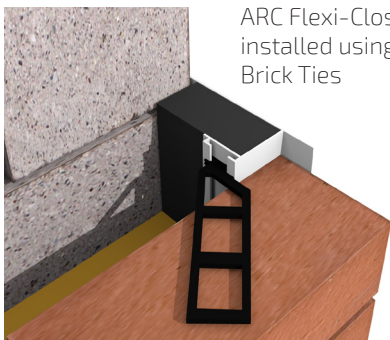
Above: Temperature distribution illustrating heat loss at a window opening where ARC Flexi-Closer is fitted.

Installation

The ARC Flexi-Closer is easily installed. Simply cut the jamb profile to the height of the window or door opening plus 75mm to allow the bottom edges to drop into the cavity below the sill. Once the jamb sections are installed, measure the required width for the sill section and cut a length to butt tightly to the jamb sections. If a longer length than 2.4m is required, see jointing method on the next page.

Option 1 (First Fix): As above and build in the jamb sections as the brickwork progresses using ARC Brick Ties* (1 every 225mm). Ties are not required on the sill section, simply hold in place with an adhesive or nail to block. *ARC Brick Ties are sold separately.

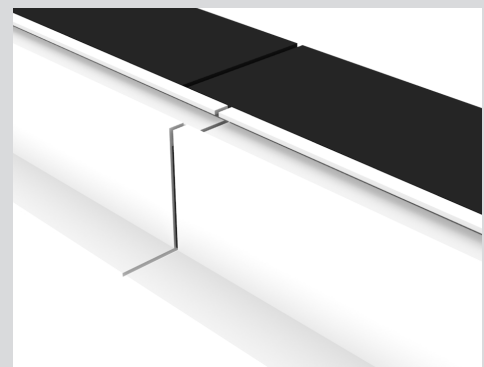
Option 2 (Second Fix): Cut sections to required size as above and simply push fit once the openings are formed. Sections can be secured by nailing to block or using a suitable adhesive.



ARC Flexi-Closer installed using ARC Brick Ties

Jointing Method

Where a longer length than the supplied 2.4m is required, the following jointing method should be used. Using an appropriate saw, remove 150mm of the plastic profile only, then push the exposed insulation into the next length of plastic profile.



Environment

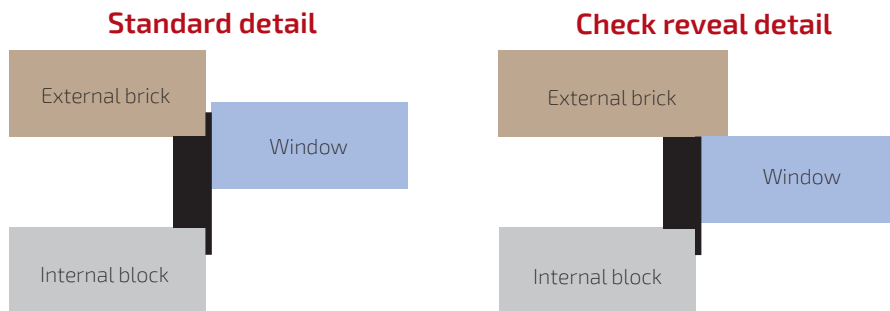
No CFCs or HCFCs are involved in the manufacturing process of ARC's EPS or XPS insulation. The material presents no known threat to the environment and is classed as ODP and GWP zero. ARC Flexi-Closers have a Green Guide rating of A+.

Health and Safety

ARC Building Solutions has an approved Health and Safety Policy and is committed to working and supplying products safely. We have assessed products as required by Substances Hazardous to Health Regulations (COSHH). An ARC COSHH data sheet is available and can be downloaded from ARC's website.

Check Reveal

ARC Flexi-Closer is available with a single flange to suit check reveal details where the window is set back behind the external brickwork.



Standard Dimensions

Product Code	FLEXICLOSER	FLEXICLOSER-L
Suits cavity widths	65, 75, 85 & 100mm	110, 125 & 150mm
Lengths supplied	2.4m lengths, 8 per pack	2.4m lengths, 6 per pack
Packaging	Packed in polythene sleeves	Packed in polythene sleeves
Insulation	Graphite EPS (ODP and GWP rating zero)	Graphite EPS (ODP and GWP rating zero)
PVCu profile	Manufactured with rigid PVCu	Manufactured with rigid PVCu

Profile Variations

ARC Flexi-Closer is supplied with different plastic profiles to suit various cavity widths as illustrated below.

