

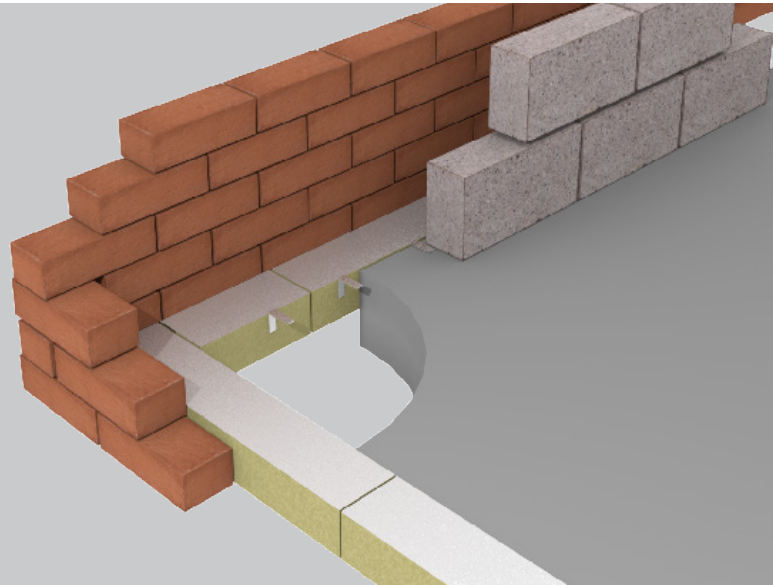
Fire Stop Slab

 cavity fire barrier
for masonry construction



key features

- » Up to two hours fire integrity
- » Foil faced to provide a smoke barrier
- » Suitable for horizontal or vertical applications
- » Cut to size on site or factory finished
- » Available to suit cavity widths up to 300mm
- » Mechanically fixed to inner leaf using arc fixing brackets



Application

ARC Fire Stop Slab provides up to two hours fire integrity horizontally or vertically within external masonry walls. It is ideal for use at separating floor levels and is designed to be mechanically fixed using ARC fixing brackets. ARC Fire Stop Slab is manufactured from rockfibre mineral wool insulation with a class 'O' reinforced aluminium foil facing to both sides offering excellent resistance to smoke.

Installation

Firstly ensure the cut size of the barrier is appropriate for the required cavity width – a 5mm compression fit is required. ARC Fire Stop Slab can either be supplied pre-cut to your specifications, or in full slab form. Where supplied in slab form, simply cut the slab to the required width using a hand saw.

Following the guidance on Page 2, the ARC Fixing Bracket is folded in to shape, and then mechanically fixed to the inner leaf using masonry screws. ARC Fire Stop Slab can then carefully be pushed in to place on the bracket. The bracket should sit in the middle of the barrier's depth, and be installed at a minimum of 600mm centres or 2 per length, whichever is higher.

Fire Properties

ARC Fire Stop Slab has been fire tested at Warrington Fire Research, achieving up to two hours fire integrity with traditional masonry brick and block construction. Tests were carried out in accordance with BS476 Pt 20 1987, BS EN 1366-4 2006 using test method EGOLF TC2 N421 (Fire Research for Cavity Barrier). *Certifire scope: CF5402*

Where usage falls outside of this scope, for example when used with external cladding, or with an internal metal frame system, performance of the fire barrier will depend upon the structural integrity and fire performance of the surrounding construction.

Specifiers must ensure any part of the construction that makes up the internal or external leaf of the wall, including support systems, are suitable for use with a fire barrier for the length of fire integrity and insulation required. Particular attention must be paid to any possible deflection or distortion which could cause gaps to form between the material and a fire barrier.

Don't take our word for it, see our certification...



Certificate Number 19310
ISO 9001, ISO 14001



Fire Properties (cont.)

In the event of a fire, ARC Building Solutions Ltd cannot accept liability for failure where usage is outside of the standard application, including but not limited to, where deflection or distortion has allowed gaps to form around the barrier, or where the barrier is not fitted in accordance with the manufacturer's guidelines.

Standards

ARC Fire Stop Slab is manufactured using rockfibre mineral wool which achieves a fire classification of Euroclass A1 as defined in BS EN 13501-1, and conforms to BS EN 13162 and EN16001 Energy Management Systems.

ARC's rockfibre mineral wool insulation has a thermal conductivity of 0.035W/mK.

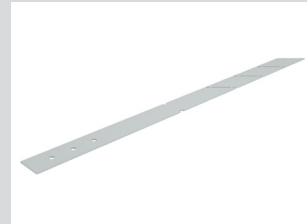
Standard Dimensions: Full Slab

Product Code	Dimensions	Fire Rating
FFS600/100	1200x600x100mm	2 hrs

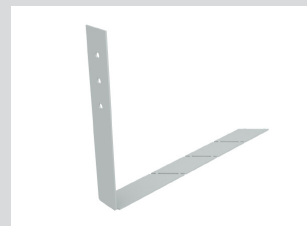
Standard Dimensions: Cut Pieces

Product Code	Suitable for Cavity Width	Dimensions	Fire Rating
FFB50	50mm	55 x 100 x 1200mm	2 hrs
FFB60	60mm	65 x 100 x 1200mm	2 hrs
FFB70	70mm	75 x 100 x 1200mm	2 hrs
FFB80	80mm	85 x 100 x 1200mm	2 hrs
FFB90	90mm	95 x 100 x 1200mm	2 hrs
FFB100	100mm	105 x 100 x 1200mm	2 hrs
FFB110	110mm	115 x 100 x 1200mm	2 hrs
FFB120	120mm	125 x 100 x 1200mm	2 hrs
FFB130	130mm	135 x 100 x 1200mm	2 hrs
FFB140	140mm	145 x 100 x 1200mm	2 hrs
FFB150	150mm	155 x 100 x 1200mm	2 hrs
FFB160	160mm	165 x 100 x 1200mm	2 hrs
FFB170	170mm	175 x 100 x 1200mm	2 hrs
FFB180	180mm	185 x 100 x 1200mm	2 hrs
FFB190	190mm	195 x 100 x 1200mm	2 hrs
FFB200	200mm	205 x 100 x 1200mm	2 hrs
FFB210	210mm	215 x 100 x 1200mm	2 hrs
FFB220	220mm	225 x 100 x 1200mm	2 hrs
FFB230	230mm	235 x 100 x 1200mm	2 hrs
FFB240	240mm	245 x 100 x 1200mm	2 hrs
FFB250	250mm	255 x 100 x 1200mm	2 hrs
FFB260	260mm	265 x 100 x 1200mm	2 hrs
FFB270	270mm	275 x 100 x 1200mm	2 hrs
FFB280	280mm	285 x 100 x 1200mm	2 hrs
FFB290	290mm	295 x 100 x 1200mm	2 hrs
FFB300	300mm	305 x 100 x 1200mm	2 hrs

Fixing Bracket Fitting Instructions



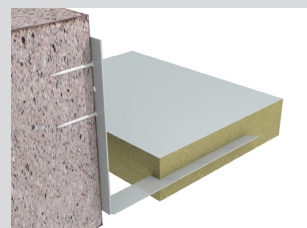
Two brackets are available: small for up to 160mm cavity and large for sizes above this.



Now bend the bracket into an 'L' shape at the fold point (a small 'U' shape cutout on each side).



Once folded the bracket can be fixed to the block. It is recommended to use at least two fixing points to ensure strength.



Now impale the insulation onto the bracket as can be seen in this cross-section. Please note two brackets should be used for each piece, approx. 150mm inwards from each end.

Fire Stop Slab

Storage and Packaging

ARC Fire Stop Slabs are supplied in polythene packs which are designed for transporting and protecting the products. It is not recommended that the packs are stored in direct sunlight. When storing the barriers for longer periods of time it is recommended that the product should be stored indoors, or under cover.

Environment

No CFCs or HCFCs are involved in the manufacturing process of ARC's rockfibre mineral wool insulation. The material presents no known threat to the environment and is classed as ODP and GWP zero.

ARC Fire Stop Slab has a Green Guide rating of A+.

Health and Safety

ARC Building Solutions has an approved Health and Safety Policy and is committed to working and supplying products safely. ARC's rockfibre mineral wool is not classed as a possible human carcinogen. We have assessed products as required by Substances Hazardous to Health Regulations (COSHH). An ARC COSHH data sheet is available and can be downloaded from ARC's website.