



CONTRACT-CLOSER

Thermal cavity closer for window and door reveals

- » Closes cavity around window and door reveals
- » Prevents cold bridging
- » Insulated with extruded polystyrene (XPS)
- » For cavity widths from 50 to 300mm
- » Supplied in 2.4m lengths
- » Single flange available for check reveal details





CONTRACT-CLOSER

Application

ARC Contract-Closer closes the cavity around window and door openings. The rigid PVCu profile is insulated with extruded polystyrene insulation (XPS) offering excellent thermal properties. Contract-Closer helps prevent moisture, mould and staining from around windows and doors.

Cold Bridging

Cold bridges are sections through the fabric of significantly lower thermal resistance than the rest of the construction. It is most commonly found around window and door openings and usually shows itself through so called pattern staining. A cold bridge through an external frame attracts moisture in the form of surface condensation which attracts dirt and dust. This surface condensation can also lead to mould growth and damage to internal plaster and paint work.

The Solution

ARC Contract-Closer will significantly reduce the risk of cold bridging around window and door openings when fitted in accordance with the manufacturer's recommendations.

ARC cavity closers have been assessed using software that complies with the Standard for Thermal Bridge Calculations BS EN ISO 10211-2007. The conventions for calculations specified in the BRE document BR497 were also followed. The results are compared with the criteria set in the BRE Information Paper IP1/06 'Assessing the Effects of Thermal Bridging at Junctions and Around Openings' which is referenced in Building Regulations as shown below.

Detail	Default F-value	F-value with ARC Contract-Closer	Default Ψ -value	Ψ -value with ARC Contract-Closer
Jamb (100mm cavity)	0.75	0.933	0.05	0.012
Sill (100mm cavity)	0.75	0.950	0.04	0.009

Installation

The ARC Contract-Closer is easily installed. Simply cut the jamb profile to the height of the window or door opening plus 75mm to allow the bottom edges to drop into the cavity below the sill. Once the jamb sections are installed, measure the required width for the sill section and cut a length to butt tightly to the jamb sections. If a longer length than 2.4m is required, see jointing method on the next page.

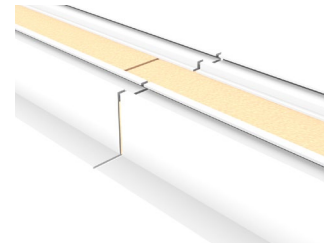
Option 1 (First Fix): As above and build in the jamb sections as the brickwork progresses using ARC Brick Ties* (1 every 225mm). Ties are not required on the sill section, simply hold in place with an adhesive or nail to block.

*ARC Brick Ties are sold separately.

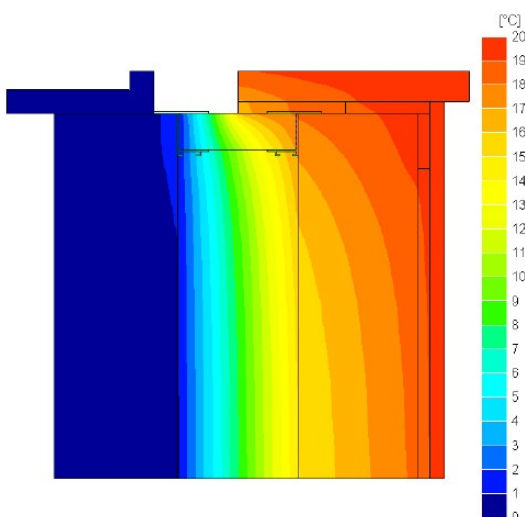
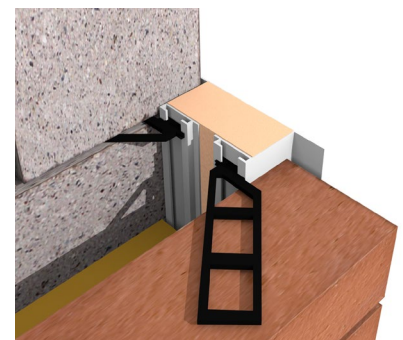
Option 2 (Second Fix): Cut sections to required size as above and simply push fit once the openings are formed. Sections can be secured by nailing to block or using a suitable adhesive.

Jointing Method

Where a longer length than the supplied 2.4m is required, the following jointing method should be used. Using an appropriate saw, remove 150mm of the plastic profile only, then push the exposed insulation into the next length of plastic profile.



Right: ARC Contract-Closer installed using ARC Brick Ties



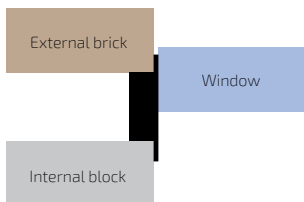
Left: Temperature distribution illustrating heat loss at a window opening where ARC Contract-Closer is fitted.

CONTRACT-CLOSER

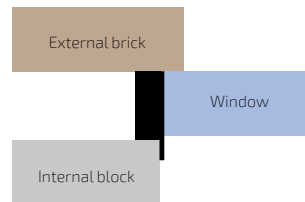
Check Reveal

ARC Contract-Closer is available with a single flange to suit check reveal details where the window is set back behind the external brickwork.

Standard detail



Check reveal detail



Key Stats

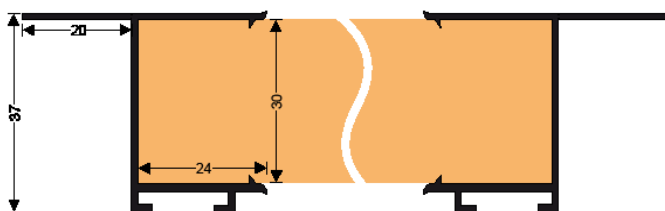
Length supplied	2.4m
Insulation	Extruded polystyrene insulation (XPS)
Thermal conductivity	0.034W/mK

Product & Packaging Specification

Product Code	Suitable for Cavity Width	Dimensions	Lengths Per Pack
CC50	50mm	50 x 2400mm	8
CC65	65mm	65 x 2400mm	8
CC75	75mm	75 x 2400mm	8
CC85	85mm	85 x 2400mm	8
CC90	90mm	90 x 2400mm	8
CC95	95mm	95 x 2400mm	8
CC100	100mm	100 x 2400mm	8
CC110	110mm	110 x 2400mm	6
CC125	125mm	125 x 2400mm	6
CC135	135mm	135 x 2400mm	6
CC150	150mm	150 x 2400mm	6
CC180	180mm	180 x 2400mm	5
CC200	200mm	200 x 2400mm	5
CC225	225mm	225 x 2400mm	4
CC250	250mm	250 x 2400mm	4
CC275	275mm	275 x 2400mm	3
CC300	300mm	300 x 2400mm	3
CC50CR - CC150CR	50 - 300mm	As above but single flange for check reveal	As above

Product Code	Description	Pack Quantity
BRICKTIES	ARC Brick Ties to suit ARC Contract-Closer	100

Profile





CONTRACT-CLOSER

Standards

ARC Contract-Closer is insulated with extruded polystyrene which conforms to BS EN 13164:2008 Thermal Insulation Products for Buildings, Factory Made Products of Extruded Polystyrene Foam (XPS).

Thermal Conductivity

ARC Contract-Closer with XPS insulation has a thermal conductivity of 0.034W/mK.

Environment

No CFCs or HCFCs are involved in the manufacturing process of ARC's XPS insulation. The material presents no known threat to the environment and is classed as ODP and GWP zero.

ARC Contract-Closers have a Green Guide rating of A+.

Health and Safety

ARC Building Solutions has an approved Health and Safety Policy and is committed to working and supplying products safely. We have assessed products as required by Substances Hazardous to Health Regulations (COSHH). An ARC COSHH data sheet is available and can be downloaded from ARC's website.

Storage and Packaging

ARC Contract-Closers are supplied in branded polythene packs which offer protection during transport as well as providing ease of identification on-site.

Any information provided within this document is intended for guidance only. Expert technical advice should be sought before specification or installation of any product. It is of particular importance to ensure that any fire barrier or fire stopping product is tested for use with the exact application intended. ARC Building Solutions Ltd cannot accept liability for failure where usage is outside of the standard application, including but not limited to, where deflection or distortion has allowed gaps to form around the barrier, or where the barrier is not fitted in accordance with the manufacturer's guidelines.

© 2021 ARC Building Solutions Ltd. ARC and T-Barrier are registered trademarks of ARC Building Solutions Ltd.



Certificate Number 19310
ISO 9001, ISO 14001
ISO 45001