

# Eco-Closer Plus

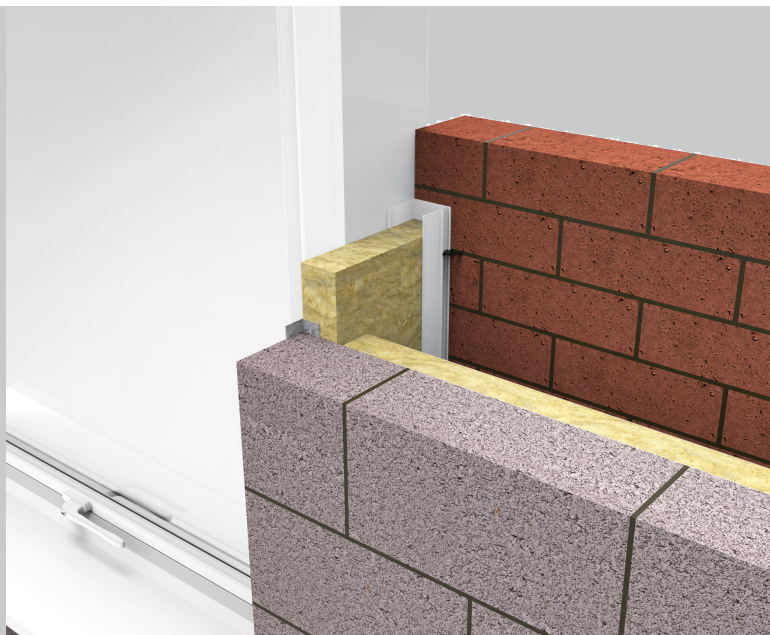


fire rated cavity closer  
for window and door reveals



## key features

- » Up to two hours fire integrity
- » Closes cavity around window and door reveals in larger cavities up to 300mm
- » Prevents cold bridging
- » Helps eliminate moisture, mould and staining from around windows and doors
- » Insulated with foil faced non-combustible rockfibre
- » Plastic profile acts as DPC
- » For cavity widths from up to 300mm



## Application

ARC Eco-Closer Plus closes wider cavities around window and door openings in masonry walls, providing up to two hours fire integrity. The rigid PVCu profile is insulated with foil faced non-combustible rockfibre mineral wool which provides fire, thermal and acoustic properties.

## Fire Properties

ARC Eco-Closer Plus has been fire tested in accordance with the principles given in EN1366-4, achieving up to two hours fire integrity within a masonry construction.

ARC Eco-Closer Plus is certificated by IFC Certification, a third-party accreditation scheme. IFC's product certifications are designed to give confidence to architects, specifiers, contractors, users, occupiers and owners that products have been thoroughly and independently evaluated and will continue to be manufactured to the same specification as originally tested.

ARC Eco-Closer Plus - IFC certificate number: IFCC 1729

## Standards

ARC Eco-Closer Plus is insulated with rockfibre mineral wool which conforms to the BS EN 13162: 2001 Thermal Insulation Products for Buildings, Factory Made Mineral Wool Products specification, and has a thermal conductivity of 0.035W/mK.

Don't take our  
word for it, see our  
certification...



Certificate Number 19310  
ISO 9001, ISO 14001  
ISO 45001



## Storage and Packaging

ARC Eco-Closers are supplied in branded polythene packs which offer protection during transport as well as providing ease of identification on-site.

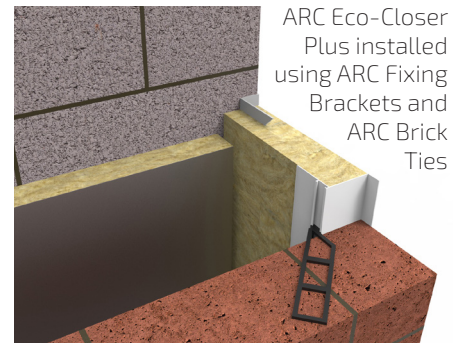
## Installation

ARC Eco-Closer Plus is easily installed. Cut the jamb profile to the height of the window or door opening plus 75mm to allow the bottom edges to drop into the cavity below the sill. Once the jamb sections are installed, measure the required width for the sill section and cut a length to butt tightly to the jamb sections.

ARC Fixing Brackets should be used to mechanically fix Eco-Closer Plus to the inner blockwork, while ARC Brick Ties are then used to build the closer in as the external brickwork progresses. We recommend a minimum of 2 of each is used per metre, or piece, whichever is shorter.

If a longer length than 2.4m is required, the profile complete with insulation should carefully be cut using a hand saw. Lengths can then be tightly butted together, with care being taken to ensure no gaps remain.

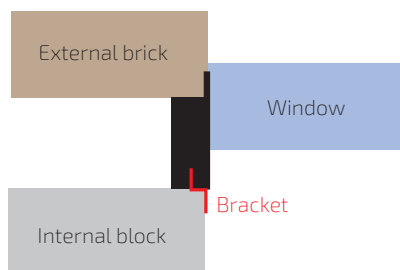
It is always recommended to fit the closer so that the plastic profile is against the external brickwork rather than the internal blockwork.



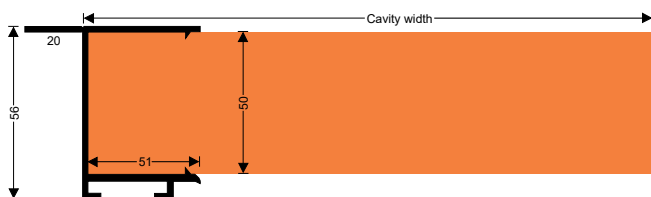
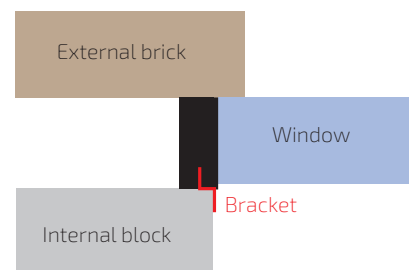
## Check Reveal

ARC Eco-Closer Plus is supplied as standard with a single flange to suit standard details. A variant can be supplied with the 20mm flange removed from the plastic profile so that the closer can be used in check reveal details, where the window is set back behind the external brickwork.

**Standard detail**



**Check reveal detail**



Environment

No CFCs or HCFCs are involved in the manufacturing process of ARC's rockfibre mineral wool insulation. The material presents no known threat to the environment and is classed as ODP and GWP zero.

ARC Eco-Closers have a Green Guide rating of A+.

Health and Safety

ARC Building Solutions has an approved Health and Safety Policy and is committed to working and supplying products safely. We have assessed products as required by Substances Hazardous to Health Regulations (COSHH). An ARC COSHH data sheet is available and can be downloaded from ARC's website.

Standard Dimensions

Product Code	Suitable for Cavity Width	Dimensions	Fire Integrity (masonry)	Insulation	Lengths Per Pack
EC175PLUS	175mm	178 x 2400mm	2 hrs	15 mins	3
EC200PLUS	200mm	203 x 2400mm	2 hrs	15 mins	3
EC225PLUS	225mm	228 x 2400mm	2 hrs	15 mins	2
EC250PLUS	250mm	253 x 2400mm	2 hrs	15 mins	2
EC275PLUS	275mm	278 x 2400mm	2 hrs	15 mins	1
EC300PLUS	300mm	303 x 2400mm	2 hrs	15 mins	1
EC175PLUSCR - EC300PLUSCR	175mm - 300mm	As above	As above	As above	As above

Product Code	Description	Pack Quantity
BRICKTIES	ARC Brick Ties to suit Eco-Closer Plus	100
FIXING BRACKETSMALL	ARC Fixing Bracket to suit Eco-Closer Plus	1

Can't find your size?

ARC Eco-Closer Plus can be manufactured to suit any cavity width from 150 and 300mm. Contact us for more information.

Smaller cavity?

ARC Eco-Closer is a fire rated cavity closer available to fit cavities up to 150mm. Visit our website for more details.

Any information provided within this document is intended for guidance only. Expert technical advice should be sought before specification or installation of any product. It is of particular importance to ensure that any fire barrier or fire stopping product is tested for use with the exact application intended. ARC Building Solutions Ltd cannot accept liability for failure where usage is outside of the standard application, including but not limited to, where deflection or distortion has allowed gaps to form around the barrier, or where the barrier is not fitted in accordance with the manufacturer's guidelines.

© 2024 ARC Building Solutions Ltd. ARC and T-Barrier are registered trademarks of ARC Building Solutions Ltd.



Certificate Number 19310  
ISO 9001, ISO 14001  
ISO 45001